



# Redpoint

See the moving world



## Personnel Badges

### What do they do?

The badges come in two versions—screened and screenless. Both versions offer:

- **Location Tracking** – Each badge reports its location up to four times per second, allowing you to track users in real-time with high accuracy.
- **Safety Alert** – A flashing LED and audible beep notify the wearer of safety alerts, while a call button allows the user to acknowledge a hazard warning.

The screened badge offers additional features, including:

- **Display Details** – The screen displays warning details related to the hazard.
- **Communication** – The user can receive and acknowledge messages and warnings.

### How can you use them?

#### Location Tracking

- Quickly ensure users are in their designated areas or monitor users who may be in hazardous areas.
- Capture historical location data for all users to provide precise time and location accountability.

#### Safety

- Badge alerts users when they are entering a dangerous zone or being approached by a vehicle.
- Users can press the emergency call button for help at any time.

#### Communication

- Text a user instruction on how to perform a task and text employees on the floor when they need to go to a location (*screened badge only*).

### Key Features

#### Accurate

Accurate up to 20cm (8”).

#### Responsive

Super low latency (200ms) is essential for safety applications where a fraction of a second makes a difference.

#### Informative

E-paper screen can display warnings or other text or graphic information (screened badge only). LED flashes and alarms communicate status updates, notifications, and hazards.

#### Interactive

A call button lets the user acknowledge alarms, check status, or call for help.

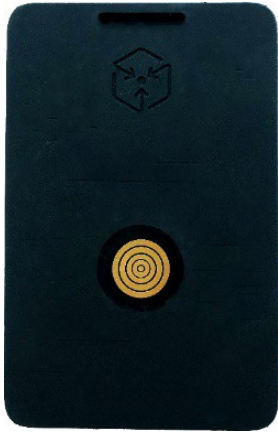


Personnel Badge Front (Right: Screened, Left: Screenless)

**Redpoint Positioning Corp.**

100 N Washington St, 6<sup>th</sup> floor, Boston, MA 02114 | +1 (617) 207-4096

[www.redpointpositioning.com](http://www.redpointpositioning.com)



Personnel Badge Back

## Electrical

Value	
Operating Frequency	3.2 - 6.4 GHz
Battery Type	Single-cell lithium-ion rechargeable
Battery Life	12 hours
Battery Life Idle	30 hours
Battery Charge Current	500 mA
Battery Charge Time	3 hours

## Peripherals

Parameter	Value
Call Button	Sends message to the server. Multi-functional, including sending an emergency message.
Display-Screened Badge	Electronic Paper Display (EPD)
Visual Alert	RGB LED provides status as well as user-alert functionality
Audible Alert	On-board buzzer alerts for safety hazards and incoming messages
Motion	6-axis IMU for motion sensing and power management
Bluetooth	Support Bluetooth Low Energy (BLE) communication
NFC Tag	Support NFC-A listen mode operation @ 13.56 MHz
Memory	500 events

## Mechanical & Environmental

Parameter	Value
Dimension	62 x 95 x 10 (mm)
Weight	Screened Badge: 56 g Screenless Badge: 52 g
Operating Temperature	-20°C to 50°C
Charging Temperature	5°C to 40°C
IP Rating	IP62

## Accessories

Parameter	Value
Charging	Magnetic USB charging cable or bank charger
Charging Voltage	5V

### Ordering information

Use part number to order products and accessories directly through Redpoint.

**Product:** 9000-0712 for the Screened Badge, 9000-0727 for the Screenless Badge.

**Accessories:** 5100-0701 for individual charge cable option, 5100-0702 for pad option with micro-USB adapter, and 9000-0726 for the 8-bay bank charger.